



Freechoice Lift Services

The Professional's Choice



Handicare - *straight stairlift*

Minivator Simplicity L

A reliable and easy to use straight stairlift with good basic functions available.

Weight Limits:

Standard Unit - 19 stone / 120kg

Dimensions:

Minimum stair width - 26 $\frac{1}{2}$ " / 675mm

Stairlift width -

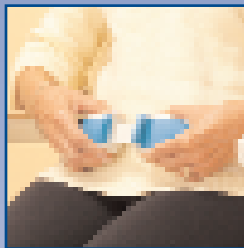
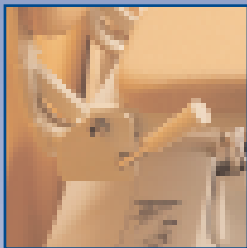
Stairlift depth (unfolded) - 22 $\frac{1}{2}$ " / 570mm

Stairlift depth (folded) -

Rail protrusion into staircase -

Seat to footrest height - 17 $\frac{1}{2}$ "-22" / 450mm-560mm

Between armrests -



Features:

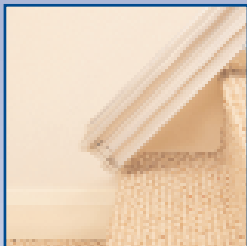
Lap belt

Isolation key switch

Infra-red remote controls

Powered footrest

Powered sliding track



Unit 3-9c
Thorpe Close
Banbury
Oxfordshire
OX16 4SW

Tel: 01295 250103

www.freechoicegroup.com

The Freechoice Group of Companies

Freechoice Lift Services

Freechoice Property Services Limited





Freechoice Lift Services

The Professional's Choice



Handicare - *straight stairlift*

Minivator Simplicity +

A reliable and easy to use straight stairlift with a range of optional extras available.

Weight Limits:

Standard Unit - 19 stone / 120kg

Dimensions:

Minimum stair width - 25 $\frac{1}{4}$ " / 645mm

Stairlift width -

Stairlift depth (unfolded) - 22 $\frac{1}{2}$ " / 570mm

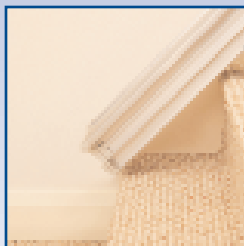
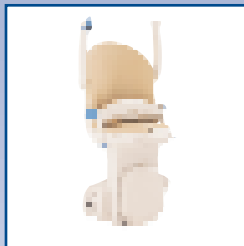
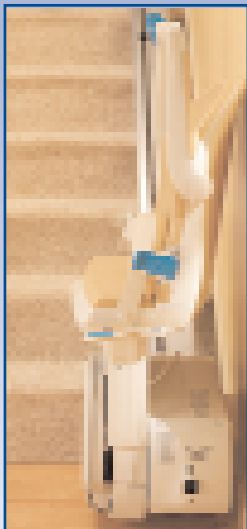
Stairlift depth (folded) -

Rail protrusion into staircase -

Seat to footrest height - 17"-21 $\frac{1}{4}$ " / 430mm-540mm

Seat to footrest height (Perch) - 26 $\frac{1}{2}$ "-34 $\frac{1}{2}$ " / 677mm-877mm

Between armrests -



Features:

Retractable belt

Isolation key switch

Infra-red remote controls

Powered swivel seat

Powered footrest

Manual hinged track

Powered sliding track

Perch seat

Choice of coloured upholstery

Unit 3-9c
Thorpe Close
Banbury
Oxfordshire
OX16 4SW

Tel: 01295 250103

www.freechoicegroup.com

The Freechoice Group of Companies

Freechoice Lift Services

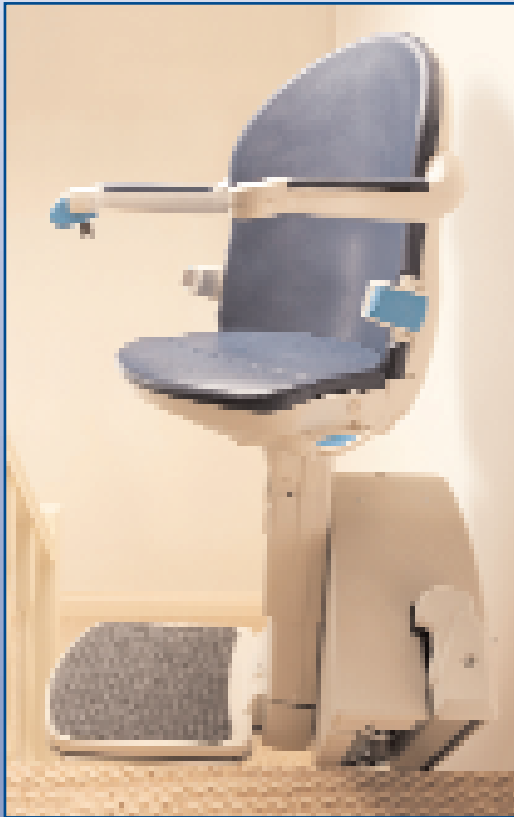
Freechoice Property Services Limited





Freechoice Lift Services

The Professional's Choice



Handicare - *straight stairlift*

Minivator 1000

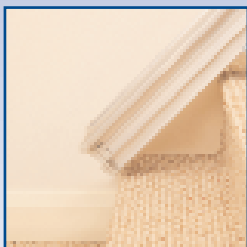
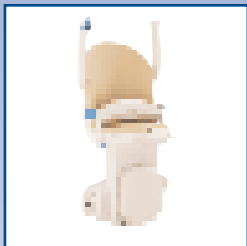
A reliable and easy to use straight stairlift with a range of optional extras available. Built with comfort in mind.

Weight Limits:

Standard Unit - 19 stone / 120kg
Heavy Duty Unit - 25 stone / 160kg
Extra Heavy Dutt Unit - 31 stone / 200kg

Dimensions:

Minimum stair width - 29" / 735mm
Stairlift width -
Stairlift depth (unfolded) - 25 1/2" / 650mm
Stairlift depth (folded) -
Rail protrusion into staircase -
Seat to footrest height - 18 1/4"-21 1/4" / 465mm-540mm
Seat to footrest height (Perch) - 26 1/2"-34 1/2" / 677mm-877mm



Features:

Retractable belt
Isolation key switch
Infra-red remote controls
Powered swivel seat
2 way powered swivel seat
Powered footrest
Manual hinged track
Powered hinged track
Powered sliding track
Perch seat
Body harness
Choice of coloured upholstery
Outdoor model available

Unit 3-9c
Thorpe Close
Banbury
Oxfordshire
OX16 4SW

Tel: 01295 250103
www.freechoicegroup.com

The Freechoice Group of Companies

Freechoice Lift Services
Freechoice Property Services Limited

