



Freechoice Lift Services

The Professional's Choice



Handicare - *curved stairlift*

Minivator 2000

A reliable and easy to use curved stairlift with comfort and safety at the forefront of its design. A dual rail system provides a very smooth and comfortable ride. This stairlift offers a full compliment of optional extras.

Weight Limits:

Standard Unit - 19 stone / 120kg

Dimensions:

Minimum stair width - 31 $\frac{1}{4}$ " / 794mm

Stairlift width -

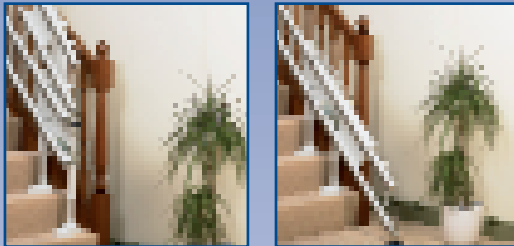
Stairlift depth (unfolded) - 27" / 689mm

Stairlift depth (folded) -

Rail protrusion into staircase -

Seat to footrest height - 19"-24 $\frac{3}{4}$ " / 485mm-630mm

Seat to footrest height (Perch) - 25 $\frac{1}{2}$ "-34 $\frac{1}{2}$ " / 650mm-875mm



Features:

Retractable belt

Isolation key switch

Onboard diagnostic data

Dual rail mechanical levelling system

Infra-red remote controls

Powered swivel seat

Powered footrest

Powered hinged track

Choice of coloured upholstery

Unit 3-9c
Thorpe Close
Banbury
Oxfordshire
OX16 4SW

Tel: 01295 250105

www.freechoicegroup.com

The Freechoice Group of Companies

Freechoice Lift Services

Freechoice Property Services Limited

